



**NovaTork**<sup>®</sup>  
TORQUE TOOLS



# NovaTork®



Shanghai UB Machinery Co., Ltd is a high-tech enterprise and a leading manufacturer and distributor of torque products including mechanical and electronic wrenches, testers, multipliers and calibration equipments.

Our modern 40,000 square meters factory is located conveniently to both downtown Shanghai and Pudong international Airport in Fengxian, Qianqiao Industrial Garden Zone near Hangzhou Bay. It is equipped with precision standard and custom-made machinery and equipment, and is staffed by professional engineers, experienced managers and highly trained production and inspection personnel. The Factory's ISO9001 accreditation and a dedication to continuous product and quality improvement is the key to producing world-class torque products that comply with international standard ISO 6789 and U.S. standard ASME B107.14.

Our products have been developed in close association with Mr. Jan S. Stasiak of the United States of America, who has over 40 years of proven and successful experience in the field of torque technology. After graduating from the University of California at Los Angeles, Mr. Stasiak held top engineering and managerial positions in leading tool-manufacturing companies including Utica Tool Company, JS Technology, and Danaher Tool Group. He is a member of American Society of Mechanical Engineers, and a former chairman of Hand Tool's Institute's Torque Wrench Standards Committee.

We have more than 20 patents and proprietary intellectual property rights.

We are eagering to provide the high quality torque products and the best service to customers all of the world.



# Adjustable (Click) Torque Wrenches, Double Window Scales, Soft Grip, Ratchet Head, Metric and English Models

- Unique double window scale with fine increments
- 1/20 of capacity minimum resolution main scale
- Compact, 45-tooth reversible ratchet head for clockwise and counterclockwise operation.
- The ratchet head needs only 8 degree swing to operate in confined spaces.
- Metric models have reference English scale, and English models have reference Metric scale.
- +/-4% Accuracy in clockwise direction from 20% to 100% Max. Torque.
- Push & pull, stay-in-place lock ring on the bottom of handle secures selected torque from accidental change
- Ergonomic, no-slip soft TPR grips are comfortable to use under all conditions and long durations.

Part #	Drive	Torque Range		Length mm	Width mm	Weight kg
		N.m	Lb.ft			
CM3100S	1/2"	20-100	15-75	360	38	0.74
CM4400S	3/4"	80-400	60-300	700	57	2.58
CM4500S	3/4"	100-500	80-400	700	57	2.60

\* S is shorten length

Part #	Drive	Torque Range		Length mm	Width mm	Weight kg
		N.m	Lb.ft			
CM3200L	1/2"	40-200	30-150	525	40	1.14
CM3335L	1/2"	65-335	50-250	700	40	1.95
CM4335L	3/4"	65-335	50-250	700	40	2.00

\* L is Extended length

## English

Part #	Drive	Torque Range		Length mm	Width mm	Weight kg
		Lb.ft	N.m			
C1200	1/4"	40-200*	4.0-22	275	38	0.54
C2250	3/8"	50-250*	60-280*	310	38	0.68
C2100	3/8"	20-100	25-135	420	38	0.90
C3100	1/2"	20-100	25-135	420	38	0.90
C3150	1/2"	30-150	40-200	460	40	1.02
C3250	1/2"	50-250	70-340	520	40	1.16
C4250	3/4"	50-250	70-340	520	40	1.20
C4400	3/4"	80-400	100-550	840	60	4.04
C4600	3/4"	100-600	150-800	1040	60	4.93
C5600	1"	100-600	150-800	1040	60	4.93

\* English is Lb.in, Metric is dN.m

Part #	Drive	Torque Range		Length mm	Width mm	Weight kg
		Lb.ft	N.m			
C3250L	1/2"	50-250	70-340	700	40	1.95
C4250L	3/4"	50-250	70-340	700	40	2.00

\* L is Extended length

## Metric

Part #	Drive	Torque Range		Length mm	Width mm	Weight kg
		N.m	Lb.ft			
CM1012	1/4"	2.5-12	20-105*	285	38	0.54
CM1020	1/4"	4.0-20	30-180*	285	38	0.54
CM2030	3/8"	6.0-30	50-250*	313	38	0.68
CM3030	1/2"	6.0-30	50-250*	313	38	0.68
CM2060	3/8"	10-60	9-45	383	38	0.82
CM3060	1/2"	10-60	9-45	383	38	0.82
CM2100	3/8"	20-100	15-75	438	38	0.90
CM3100	1/2"	20-100	15-75	438	38	0.90
CM2125	3/8"	25-125	20-90	438	38	0.90
CM3125	1/2"	25-125	20-90	438	38	0.90
CM3200	1/2"	40-200	30-150	463	40	1.02
CM3335	1/2"	65-335	50-250	523	40	1.16
CM4335	3/4"	65-335	50-250	523	40	1.20
CM4500	3/4"	100-500	80-400	840	60	4.04
CM4800	3/4"	160-800	120-600	1040	60	4.93
CM5800	1"	160-800	120-600	1040	60	4.93
CM41000	3/4"	200-1000	150-750	1040	60	4.93
CM51000	1"	200-1000	150-750	1040	60	4.93
CM51500	1"	300-1500	200-1100	1250	72	8.20
CM52000	1"	400-2000	300-1500	1250	72	8.20
CM53000	1"	600-3000	400-2200	1250	72	9.50

\* Unit is Lb.in





# Adjustable (Click) Torque Wrenches, Double Window Scales, Soft Grip, Head Holder, Metric and English Models

## Metric

Part #	Shank Size	Torque Range		Length mm	Width mm	Weight kg
		N.m	Lb.ft			
CMH912	9X12	2.5-12	20-105*	279	38	0.44
CMH920	9X12	4.0-20	30-180*	279	38	0.44
CMH930	9X12	6.0-30	50-250*	298	38	0.58
CMH960	9X12	10-60	9-45	367	38	0.72
CMH9100	9X12	20-100	15-75	422	38	0.80
CMH9125	9X12	25-125	20-90	422	38	0.80
CMH14200	14X18	40-200	30-150	455	38	0.92
CMH14335	14X18	65-335	50-250	515	38	1.06
CMH24500	24X32	100-500	80-400	840	56	4.04
CMH24800	24X32	160-800	120-600	1040	56	4.93
CMH241000	24X32	200-1000	150-750	1040	56	4.93
CMH271500	27X36	300-1500	200-1100	1250	64	8.00
CMH272000	27X36	400-2000	300-1500	1250	64	8.00
CMH273000	27X36	600-3000	400-2200	1250	64	9.30

\* Unit is Lb.in

Part #	Shank Size	Torque Range		Length mm	Width mm	Weight kg
		N.m	Lb.ft			
CMR1612	φ16	2.5-12	20-105*	283	38	0.44
CMR1620	φ16	4.0-20	30-180*	283	38	0.44
CMR1630	φ16	6.0-30	50-250*	302	38	0.58
CMR1660	φ16	10-60	9-45	371	38	0.72
CMR16125	φ16	25-125	20-90	426	38	0.80
CMR16200	φ16	40-200	30-150	450	38	0.92
CMR16335	φ16	65-335	50-250	510	38	1.06
CMR16400	φ16	80-400	60-300	690	38	1.85
CMR22500	φ22	100-500	80-400	790	38	3.30
CMR22800	φ22	160-800	120-600	990	38	4.20
CMR221000	φ22	200-1000	150-750	990	38	4.20

\* Unit is Lb.in

Part #	Shank Size	Torque Range		Length mm	Width mm	Weight kg
		N.m	Lb.ft			
CMH24400S	24X32	80-400	60-300	700	56	2.60
CMH24500S	24X32	100-500	80-400	700	56	2.75

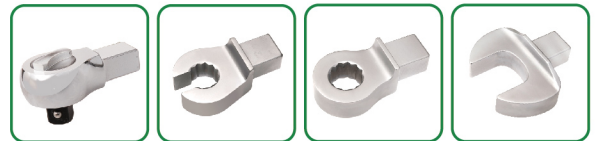
\* S is shorten length

Part #	Shank Size	Torque Range		Length mm	Width mm	Weight kg
		N.m	Lb.ft			
CMH14335L	14X18	65-335	50-250	695	38	1.85

\* L is Extended length



- Unique double window scale with fine increments
- 1/20 of capacity minimum resolution main scale
- Rectangular shank head holders: 9x12mm, 14x18mm, 24x32mm and 27x36mm, accommodate different types and sizes of heads for varied applications.
- Round shank head holders: Φ16mm, Φ22mm, accommodate different types and sizes of heads for varied applications.
- Metric models have reference English scale, and English models have reference Metric scale.
- +/-4% Accuracy in clockwise direction from 20% to 100% Max. Torque.
- Push & pull, stay-in-place lock ring on the bottom of handle secures selected torque from accidental change
- Ergonomic, no-slip soft TPR grips are comfortable to use under all conditions and long durations.



Part #	Round Hole	Torque Range		Length mm	Width mm	Weight kg
		N.m	Lb.ft			
CMR16335L	φ16	65-335	50-250	690	38	1.85

\* L is Extended length

## English

Part #	Shank Size	Torque Range		Length mm	Width mm	Weight kg
		Lb.ft	N.m			
CH9200	9X12	40-200*	4.0-22	260	38	0.44
CH9250	9X12	50-250*	60-280*	295	38	0.58
CH9100	9X12	20-100	25-135	405	38	0.80
CH14150	14X18	30-150	40-200	455	38	0.92
CH14250	14X18	50-250	70-340	515	38	1.06
CH24400	24X32	80-400	100-550	840	56	4.04
CH24600	24X32	100-600	150-800	1040	56	4.93

\* English is Lb.in, Metric is dN.m

Part #	Shank Size	Torque Range		Length mm	Width mm	Weight kg
		Lb.ft	N.m			
CH14250L	14X18	50-250	70-340	695	38	1.85



# Micrometer Adjustable (Click) Torque Wrenches, Ratchet Head, Metal Handle, Metric and English Models

- All-steel construction, superb durability.
- Permanently stamped major and minor scales for precision torque values setting.
- Minor scale with minimum 1/10th resolution.
- Convenient English major reference scale for Metric models and vice versa.
- Compact, 45-tooth reversible ratchet head for clockwise and counterclockwise operation.
- The ratchet head needs only 8 degree swing to operate in confined spaces.
- +/-4% Accuracy in clockwise direction from 20% to 100% Max. Torque.
- Pull to unlock lock ring keeps selected torque secure from accidental change.
- Grooved non-slip grip fits comfortably in your hand.

Part #	Drive	Torque Range		Length mm	Width mm	Weight kg
		N.m	Lb.ft			
GM4400S	3/4"	80-400	60-300	710	57	3.00
GM4500S	3/4"	100-500	80-400	710	57	3.00

\* S is shorten length

Part #	Drive	Torque Range		Length mm	Width mm	Weight kg
		N.m	Lb.ft			
GM3200L	1/2"	40-200	30-150	525	40	1.29
GM3335L	1/2"	65-335	50-250	700	40	2.10
GM4335L	3/4"	65-335	50-250	700	40	2.15

\* L is Extended length

Part #	Drive	Torque Range		Length mm	Width mm	Weight kg	Extension
		N.m	Lb.ft				
GM51500E	1"	300-1500	200-1100	2200	72	12.1	1
GM52000E	1"	400-2000	300-1500	2200	72	12.1	1
GM53000E	1"	600-3000	400-2000	2780	72	15.5	1



## Metric

Part #	Drive	Torque Range		Length mm	Width mm	Weight kg
		N.m	Lb.ft			
GM112	1/4"	2.5-12	20-105*	290	38	0.68
GM120	1/4"	4.0-20	30-180*	290	38	0.68
GM230	3/8"	6.0-30	50-250*	318	38	0.82
GM330	1/2"	6.0-30	50-250*	318	38	0.82
GM260	3/8"	10-60	9-45	388	38	0.96
GM360	1/2"	10-60	9-45	388	38	0.96
GM2100	3/8"	20-100	15-75	443	38	1.04
GM3100	1/2"	20-100	15-75	443	38	1.04
GM2125	3/8"	25-125	20-90	443	38	1.04
GM3125	1/2"	25-125	20-90	443	38	1.04
GM3200	1/2"	40-200	30-150	468	40	1.16
GM3335	1/2"	65-335	50-250	528	40	1.30
GM4335	3/4"	65-335	50-250	528	40	1.34
GM4500	3/4"	100-500	80-400	855	60	5.00
GM4800	3/4"	160-800	120-600	1055	60	5.90
GM5800	1"	160-800	120-600	1055	60	5.90
GM41000	3/4"	200-1000	150-750	1055	60	5.90
GM51000	1"	200-1000	150-750	1055	60	5.90
GM51500	1"	300-1500	200-1100	1260	72	9.20
GM52000	1"	400-2000	300-1500	1260	72	9.20
GM53000	1"	600-3000	400-2000	1260	72	10.5

\* Unit is Lb.in

## English

Part #	Drive	Torque Range		Length mm	Width mm	Weight kg
		Lb.ft	N.m			
G1200	1/4"	40-200*	4.0-22	280	38	0.68
G2250	3/8"	50-250*	6.0-30	315	38	0.82
G2100	3/8"	20-100	25-135	425	38	1.04
G3100	1/2"	20-100	25-135	425	38	1.04
G3150	1/2"	30-150	40-200	505	40	1.16
G3250	1/2"	50-250	70-340	525	40	1.30
G4250	3/4"	50-250	70-340	525	40	1.34
G4400	3/4"	80-400	100-550	855	60	5.00
G4600	3/4"	100-600	150-800	1055	60	5.90
G5600	1"	100-600	150-800	1055	60	5.90
G51000	1"	200-1000	250-1350	1260	72	9.20
G52000	1"	400-2000	500-2700	1260	72	10.5

\* Unit is Lb.in

Part #	Drive	Torque Range		Length mm	Width mm	Weight kg
		Lb.ft	N.m			
G3250L	1/2"	50-250	70-340	705	40	2.10
G4250L	3/4"	50-250	70-340	705	40	2.15

\* L is Extended length



# Micrometer Adjustable (Click) Torque Wrenches, Head Holder, Metal Handle, Metric and English Models

## Metric

Part #	Shank Size	Torque Range		Length mm	Width mm	Weight kg
		N.m	Lb.ft			
GMH912	9X12	2.5-12	20-105*	284	38	0.58
GMH920	9X12	4.0-20	30-180*	284	38	0.58
GMH930	9X12	6.0-30	50-250*	303	38	0.72
GMH960	9X12	10-60	9-45	372	38	0.86
GMH9100	9X12	20-100	15-75	427	38	0.94
GMH9125	9X12	25-125	20-90	427	38	0.94
GMH14200	14X18	40-200	30-150	460	38	1.06
GMH14335	14X18	65-335	50-250	520	38	1.20
GMH24500	24X32	100-500	80-400	855	56	5.00
GMH24800	24X32	160-800	120-600	1055	56	5.90
GMH241000	24X32	200-1000	150-750	1055	56	5.90
GMH271500	27X36	300-1500	200-1100	1249	64	9.00
GMH272000	27X36	400-2000	300-1500	1249	64	9.00
GMH273000	27X36	600-3000	400-2000	1249	64	10.3

\* Unit is Lb.in

Part #	Shank Size	Torque Range		Length mm	Width mm	Weight kg
		N.m	Lb.ft			
GMH14335L	14X18	65-335	50-250	700	38	2.00

Part #	Shank Size	Torque Range		Length mm	Width mm	Weight kg
		N.m	Lb.ft			
GMH24400S	24X32	80-400	60-300	710	56	2.80
GMH24500S	24X32	100-500	80-400	710	56	3.00

\* S is shorten length

Part #	Shank Size	Torque Range		Length mm	Width mm	Weight kg
		N.m	Lb.ft			
GMR1612	φ16	2.5-12	20-105*	288	38	0.58
GMR1620	φ16	4.0-20	30-180*	288	38	0.58
GMR1630	φ16	6.0-30	50-250*	307	38	0.72
GMR1660	φ16	10-60	9-45	377	38	0.86
GMR16125	φ16	25-125	20-90	431	38	0.94
GMR16200	φ16	40-200	30-150	455	38	1.06
GMR16335	φ16	65-335	50-250	515	38	1.20
GMR16400	φ16	80-400	60-300	695	38	2.00
GMR22500	φ22	100-500	80-400	800	38	4.30
GMR22800	φ22	160-800	120-600	1005	38	5.20
GMR221000	φ22	200-1000	150-750	1005	38	5.20

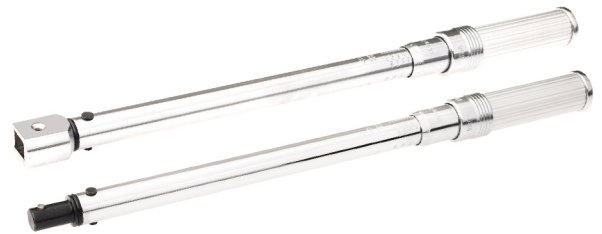
\* Unit is Lb.in

Part #	Shank Size	Torque Range		Length mm	Width mm	Weight kg
		N.m	Lb.ft			
GMR16335L	φ16	65-335	50-250	695	38	2.00

\* L is Extended length



- All-steel construction, superb durability.
- Permanently stamped major and minor scales for precision torque values setting.
- Minor scale with minimum 1/10th resolution.
- Convenient English major reference scale for Metric models and vice versa.
- Rectangular shank head holders: 9x12mm, 14x18mm, 24x32mm and 27x36mm, accommodate different types and sizes of heads for varied applications.
- Round shank head holders: φ16mm, φ22mm, accommodate different types and sizes of heads for varied applications.
- +/-4% Accuracy in clockwise direction from 20% to 100% Max. Torque.
- Pull to unlock lock ring keeps selected torque secure from accidental change.
- Grooved non-slip grip fits comfortably in your hand.



Part #	Shank Size	Torque Range		Length mm	Width mm	Weight kg	Extension
		N.m	Lb.ft				
GMH271500E	27X36	300-1500	200-1100	2200	64	12.5	1
GMH272000E	27X36	400-2000	300-1500	2200	64	12.5	1
GMH273000E	27X36	600-3000	400-2000	2780	64	15.3	1

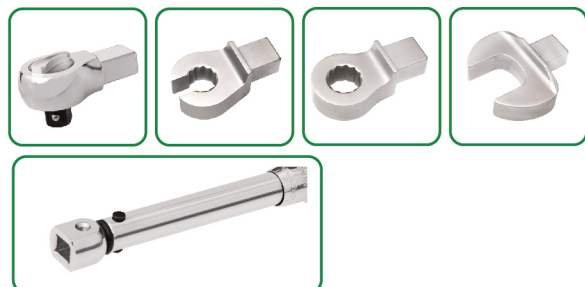
## English

Part #	Shank Size	Torque Range		Length mm	Width mm	Weight kg
		Lb.ft	N.m			
GH9200	9X12	40-200*	4.0-22	265	38	0.58
GH9250	9X12	50-250*	6.0-30	300	38	0.72
GH9100	9X12	20-100	25-135	410	38	0.94
GH14150	14X18	30-150	40-200	500	38	1.06
GH14250	14X18	50-250	70-340	520	38	1.20
GH24400	24X32	80-400	100-550	855	56	5.00
GH24600	24X32	100-600	150-800	1055	56	5.90
GH271000	27X36	200-1000	250-1350	1260	64	9.00
GH272000	27X36	400-2000	500-2700	1260	64	10.3

\* Unit is Lb.in

Part #	Shank Size	Torque Range		Length mm	Width mm	Weight kg
		Lb.ft	N.m			
GH14250L	14X18	50-250	70-340	700	38	2.00

\* L is Extended length



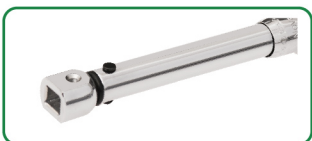
- Small Sizes, small capacities for small torque applications.
- The ratchet head on GS and GSM models needs only 8 degree swing to operate in confined spaces.
- Rectangular shank head holder 9x12mm accommodates different types and sizes of heads for varied applications.
- Round shank head holder  $\Phi 12$ mm accommodates variety of heads.
- Permanently stamped major and minor scales for precision torque values setting.
- Minor scale with minimum 1/10th resolution.
- +/-4% Accuracy in clockwise direction from 20% to 100% Max. Torque.
- Pull to unlock lock ring keeps selected torque secure from accidental change.
- Grooved non-slip grip fits comfortably in your hand.

## English

Part #	Drive	Torque Range Lb.in	Length mm	Width mm	Weight kg
GS150S	1/4"	10-50	183	28	0.32
GS1100S	1/4"	20-100	195	28	0.34
GS1150S	1/4"	30-150	207	28	0.36

Part #	Shank Size	Torque Range Lb.in	Length mm	Width mm	Weight kg
GSH950S	9X12	10-50	167	28	0.28
GSH9100S	9X12	20-100	179	28	0.30
GSH9150S	9X12	30-150	191	28	0.32

Part #	Shank Size	Torque Range Lb.in	Length mm	Width mm	Weight kg
GSR1250S	$\phi 12$	10-50	167	28	0.28
GSR12100S	$\phi 12$	20-100	179	28	0.28
GSR12150S	$\phi 12$	30-150	191	28	0.32



## Metric

Part #	Drive	Torque Range N.m	Length mm	Width mm	Weight kg
GSM15S	1/4"	1-5	183	28	0.32
GSM110S	1/4"	2-10	195	28	0.33
GSM115S	1/4"	3-15	207	28	0.34
GSM125S	1/4"	5-25	230	28	0.36
GSM240S	3/8"	8-40	260	36	0.39
GSM260S	3/8"	10-60	310	36	0.53

\* Unit is Lb.in

Part #	Shank Size	Torque Range N.m	Length mm	Width mm	Weight kg
GSMH95S	9X12	1-5	167	28	0.28
GSMH910S	9X12	2-10	179	28	0.30
GSMH915S	9X12	3-15	191	28	0.31
GSMH925S	9X12	5-25	214	28	0.33
GSMH940S	9X12	8-40	244	28	0.36
GSMH960S	9X12	10-60	278	28	0.41

Part #	Shank Size	Torque Range N.m	Length mm	Width mm	Weight kg
GSMR125S	$\phi 12$	1-5	167	28	0.28
GSMR1210S	$\phi 12$	2-10	179	28	0.28
GSMR1215S	$\phi 12$	3-15	191	28	0.30
GSMR1225S	$\phi 12$	5-25	214	28	0.32
GSMR1240S	$\phi 12$	8-40	244	28	0.34
GSMR1260S	$\phi 12$	10-60	278	28	0.39





# Dial Torque Wrench - DSM/DSM-D, DS/DS-D

## English

Part #	Drive	Torque Range		Length mm	Width mm	Weight kg	Extension
		Lb.ft	N.m				
DS118	1/4"	0-18*	0-2	310	37	0.57	w/o
DS125	1/4"	0-25*	0-3	310	37	0.57	w/o
DS150	1/4"	0-50*	0-6	310	37	0.57	w/o
DS170	1/4"	0-70*	0-8	310	37	0.57	w/o
DS2100	3/8"	0-100*	0-12	310	37	0.57	w/o
DS2150	3/8"	0-150*	0-17.5	310	37	0.57	w/o
DS2175	3/8"	0-175*	0-20	310	37	0.57	w/o
DS2225	3/8"	0-225*	0-25	310	37	0.57	w/o
DS2250	3/8"	0-250*	0-30	310	37	0.57	w/o
DS2300	3/8"	0-300*	0-35	400	37	0.76	w/o
DS2350	3/8"	0-350*	0-40	400	37	0.76	w/o
DS235	3/8"	0-35	0-50	400	37	0.76	w/o
DS245	3/8"	0-45	0-60	400	37	0.76	w/o
DS370	1/2"	0-70	0-100	480	37	0.91	w/o
DS390	1/2"	0-90	0-120	480	37	0.91	w/o
DS3100	1/2"	0-100	0-140	480	37	0.91	w/o
DS3150	1/2"	0-150	0-200	550	37	1.05	w/o
DS3175	1/2"	0-175	0-250	550	37	1.05	w/o
DS3200	1/2"	0-200	0-275	550	37	1.05	w/o
DS3250	1/2"	0-250	0-350	550	37	1.05	w/o
DS4300	3/4"	0-300	0-400	818	59	3.40	w/o
DS4350	3/4"	0-350	0-500	818	59	3.40	w/o
DS4450	3/4"	0-450	0-600	1192	59	6.40	1
DS4600	3/4"	0-600	0-800	1192	59	6.40	1
DS4700	3/4"	0-700	0-1000	1192	59	6.40	1
DS51000	1"	0-1000	0-1400	1620	59	8.80	1
DS51500	1"	0-1500	0-2000	1620	59	8.80	1

\* Unit is Lb.in

\* If need clockwise and counter-clockwise direction accuracy, add "D" after Part#, like: DS118D



- All-steel construction, superb durability.
- Nylon covering protects the square drive.
- DSM models are clockwise direction operation only.
- DSM-D are clockwise & counterclockwise direction operation.
- Accuracy: +/-3% from 20% to 100% of Max. Torque (+/-4% accuracy for wrenches with capacities above 400N.m)
- Peak torque holding function with included memory needle.

## Metric

Part #	Drive	Torque Range		Length mm	Width mm	Weight kg	Extension
		N.m	Lb.ft				
DSM12	1/4"	0-2	0-18*	310	37	0.57	w/o
DSM13	1/4"	0-3	0-25*	310	37	0.57	w/o
DSM16	1/4"	0-6	0-50*	310	37	0.57	w/o
DSM18	1/4"	0-8	0-70*	310	37	0.57	w/o
DSM212	3/8"	0-12	0-100*	310	37	0.57	w/o
DSM217.5	3/8"	0-17.5	0-150*	310	37	0.57	w/o
DSM220	3/8"	0-20	0-175*	310	37	0.57	w/o
DSM225	3/8"	0-25	0-225*	310	37	0.57	w/o
DSM230	3/8"	0-30	0-250*	310	37	0.57	w/o
DSM235	3/8"	0-35	0-300*	400	37	0.76	w/o
DSM240	3/8"	0-40	0-350*	400	37	0.76	w/o
DSM250	3/8"	0-50	0-35	400	37	0.76	w/o
DSM260	3/8"	0-60	0-45	400	37	0.76	w/o
DSM3100	1/2"	0-100	0-70	480	37	0.91	w/o
DSM3120	1/2"	0-120	0-90	480	37	0.91	w/o
DSM3140	1/2"	0-140	0-100	480	37	0.91	w/o
DSM3200	1/2"	0-200	0-150	550	37	1.05	w/o
DSM3250	1/2"	0-250	0-175	550	37	1.05	w/o
DSM3275	1/2"	0-275	0-200	550	37	1.05	w/o
DSM3350	1/2"	0-350	0-250	550	37	1.05	w/o
DSM4400	3/4"	0-400	0-300	818	59	3.40	w/o
DSM4500	3/4"	0-500	0-350	818	59	3.40	w/o
DSM4600	3/4"	0-600	0-450	1192	59	6.40	1
DSM4800	3/4"	0-800	0-600	1192	59	6.40	1
DSM41000	3/4"	0-1000	0-700	1192	59	6.40	1
DSM51400	1"	0-1400	0-1000	1620	59	8.80	1
DSM52000	1"	0-2000	0-1500	1620	59	8.80	1

\* Unit is Lb.in

\* If need clockwise and counter-clockwise direction accuracy, add "D" after Part#, like: DSM12D



- Easy to adjust to desired torque (in the tool room, appropriate torque tester is required)
- Torque value cannot be changed accidentally by the operator, ideal for assembly line use.
- P is Ratchet Head type, PH is Rectangular Shank Head Holder type, PR is Round Shank Head Holder type
- PH models head holders: 9x12mm, 14x18mm, 24x32mm and 27x36mm, accommodate different types and sizes of heads for varied applications.
- PR models head holders:  $\Phi$ 16mm,  $\Phi$ 22mm, accommodate variety of round shank heads for varied applications.
- Accuracy: +/-4% in clockwise direction from 20% to 100% Max. Torque.
- Two different grip styles are available:  
Grooved Aluminum Handle ---add "AL" behind model no.  
Plastic soft handle ---add "P" behind model no.

Part #	Shank Size	Torque Range		Length mm	Width mm	Weight kg
		N.m	Lb.ft			
PR1612AL/P	$\phi$ 16	2.5-12	20-105*	249	28	0.38
PR1620AL/P	$\phi$ 16	8-20	60-180*	249	28	0.38
PR1630AL/P	$\phi$ 16	10-30	90-250*	269	28	0.52
PR1660AL/P	$\phi$ 16	20-60	15-45	309	28	0.66
PR16125AL/P	$\phi$ 16	50-125	40-90	389	28	0.74
PR16200AL/P	$\phi$ 16	80-200	60-150	435	32	0.86
PR16335AL/P	$\phi$ 16	120-335	90-250	500	32	1.00
PR22500AL/P	$\phi$ 22	200-500	150-400	780	38	3.30
PR22800AL/P	$\phi$ 22	300-800	225-600	980	38	4.20
PR221000AL/P	$\phi$ 22	400-1000	300-750	980	38	4.20

\* Unit is Lb.in



## Metric

Part #	Drive	Torque Range		Length mm	Width mm	Weight kg
		N.m	Lb.ft			
P112AL/P	1/4"	2.5-12	20-105*	260	38	0.48
P120AL/P	1/4"	8-20	60-180*	260	38	0.48
P230AL/P	3/8"	10-30	90-250*	280	38	0.62
P330AL/P	1/2"	10-30	90-250*	280	38	0.62
P260AL/P	3/8"	20-60	15-45	320	38	0.76
P360AL/P	1/2"	20-60	15-45	320	38	0.76
P2125AL/P	3/8"	50-125	40-90	400	38	0.84
P3125AL/P	1/2"	50-125	40-90	400	38	0.84
P3200AL/P	1/2"	80-200	60-150	445	40	0.96
P3335AL/P	1/2"	120-335	90-250	510	40	1.10
P4335AL/P	3/4"	120-335	90-250	510	40	1.14
P4500AL/P	3/4"	200-500	150-400	830	60	4.00
P4800AL/P	3/4"	300-800	225-600	1030	60	4.90
P5800AL/P	1"	300-800	225-600	1030	60	4.90
P41000AL/P	3/4"	400-1000	300-750	1030	60	4.90
P51000AL/P	1"	400-1000	300-750	1030	60	4.90
P51500AL/P	1"	600-1500	400-1100	1250	72	8.20
P52000AL/P	1"	800-2000	600-1500	1250	72	8.20
P53000AL/P	1"	1200-3000	800-2200	1250	72	9.50

\* Unit is Lb.in

Part #	Shank Size	Torque Range		Length mm	Width mm	Weight kg
		N.m	Lb.ft			
PH912AL/P	9X12	2.5-12	20-105*	245	28	0.38
PH920AL/P	9X12	8-20	60-180*	245	28	0.38
PH930AL/P	9X12	10-30	90-250*	265	28	0.52
PH960AL/P	9X12	20-60	15-45	305	28	0.66
PH9125AL/P	9X12	50-125	40-90	385	28	0.74
PH14200AL/P	14X18	80-200	60-150	440	32	0.86
PH14335AL/P	14X18	120-335	90-250	505	32	1.00
PH24500AL/P	24X32	200-500	150-400	830	56	4.00
PH24800AL/P	24X32	300-800	225-600	1030	56	4.90
PH241000AL/P	24X32	400-1000	300-750	1030	56	4.90
PH271500AL/P	27X36	600-1500	400-1100	1250	64	8.00
PH272000AL/P	27X36	800-2000	600-1500	1250	64	8.00
PH273000AL/P	27X36	1200-3000	800-2200	1250	64	9.30

\* Unit is Lb.in





## English

Part #	Drive	Torque Range Lb.ft	Length mm	Width mm	Weight kg
U1150	1/4"	30-150*	297	30	0.55
U2250	3/8"	50-250*	338	38	0.70
U2500	3/8"	100-500*	371	38	0.75
U21000	3/8"	200-1000*	420	38	0.85
U3100	1/2"	20-100	446	42	0.90
U3150	1/2"	30-150	465	42	1.00
U3200	1/2"	40-200	530	42	1.10
U3250	1/2"	50-250	570	42	1.20
U4400	3/4"	80-400	855	60	4.90
U4600	3/4"	100-600	1055	60	5.80
U4750	3/4"	150-750	1055	60	5.80
U51000	1"	200-1000	1260	72	9.10
U51500	1"	300-1500	1260	72	9.10
U52000	1"	400-2000	1260	72	10.4

\* Unit is Lb.in



## Adjustable (Click) Torque Wrench with Plastic Grip, Ratchet Head-UM\_P/U\_P Models

- Alloy steel housing for strength and durability
- Major and minor scales for precision torque values setting.
- Minor scale with minimum 1/10th resolution.
- Convenient English major reference scale for metric models and vice versa.
- Compact, 45-tooth reversible ratchet head for clockwise and counterclockwise operation on GM and G models.
- The ratchet on GM and G models needs only 8 degree swing to operate in confined spaces.
- Accuracy: +/- 4% in clockwise direction from 20% to 100% of Max. Torque
- Pull to unlock lock ring keeps selected torque secure from accidental change.



## UB Wrench with Ratchet Head - Metric and English Models

- Flattened alloy steel housing for more strength and rigidity
- Simple, knurled non-slip handle, light weight
- 45 tooth ratchet, 8 degree swing enables the wrench work in tight places
- Clear, easy to read scale
- Secondary, 1/10 scale for more precise torque selection.
- Accuracy: +/- 4% accuracy in clockwise direction from 20% to 100% of Max. Torque
- Unique, easy to use adjusting knob locks in place to prevent selected torque from accidental change.

## Metric

Part #	Drive	Torque Range N.m	Length mm	Width mm	Weight kg
UM1012	1/4"	3-12	297	30	0.55
UM1020	1/4"	4-20	297	30	0.55
UM2030	3/8"	6-30	338	38	0.70
UM2060	3/8"	10-60	371	38	0.75
UM2100	3/8"	20-100	420	38	0.85
UM3150	1/2"	30-150	446	42	0.90
UM3200	1/2"	40-200	465	42	1.00
UM3250	1/2"	50-250	530	42	1.10
UM3340	1/2"	60-340	570	42	1.20
UM4500	3/4"	100-500	855	60	4.90
UM4800	3/4"	160-800	1055	60	5.80
UM41000	3/4"	200-1000	1055	60	5.80
UM51500	1"	300-1500	1260	72	9.10
UM52000	1"	400-2000	1260	72	9.10
UM52500	1"	500-2500	1260	72	10.4

## Metric

Part #	Drive	Torque Range N.m	Torque Range Lb.ft	Length mm	Width mm	Weight kg
UM112P	1/4"	2.5-12	20-105*	290	38	0.53
UM120P	1/4"	4.0-20	30-180*	290	38	0.53
UM230P	3/8"	6.0-30	50-250*	318	38	0.67
UM330P	1/2"	6.0-30	50-250*	318	38	0.67
UM260P	3/8"	10-60	9-45	388	38	0.81
UM360P	1/2"	10-60	9-45	388	38	0.81
UM2125P	3/8"	25-125	20-90	443	38	0.89
UM3125P	1/2"	25-125	20-90	443	38	0.89
UM3200P	1/2"	40-200	30-150	468	40	1.01
UM3335P	1/2"	65-335	50-250	528	40	1.15

## English

Part #	Drive	Torque Range Lb.ft	Torque Range N.m	Length mm	Width mm	Weight kg
U1200P	1/4"	40-200*	4.0-22	280	38	0.53
U2250P	3/8"	50-250*	6.0-30	315	38	0.67
U2100P	3/8"	20-100	25-135	425	38	0.89
U3100P	1/2"	20-100	25-135	425	38	0.89
U3150P	1/2"	30-150	40-200	505	40	1.01
U3250P	1/2"	50-250	70-340	525	40	1.15

\* Unit is Lb.in

- Press any key to wake up.
- EEM is Ratchet Head type for different Square Drives; EEMH is Rectangular Shank Head Holder type; EEMR is Round Shank Head Holder type.
- Rectangular Shank Head Holder size of EEMH/EEH models is 9x12mm, 14x18mm, accommodates variety of designs and sizes of drives.
- Round Shank Head Holder size of EEMR models is  $\Phi$ 16mm, accommodates variety of designs and sizes of drives.
- All popular torque Units can be selected by user: N.m; Lb.in, Lb.ft.
- Target torque can be easily set by the user on a large LCD display
- When applied torque is near target torque, yellow LED lights up.
- Target torque can be easily set by the user on a large LCD display. When torque is within 2% of target, red LED blinks and the buzzer beeps. At the target torque the red LED lights up and the buzzer sounds continuously.
- Backlight makes it easy to operate in dark conditions, can be turned ON or OFF.
- Battery capacity indicator.
- Uses 4 standard AA batteries
- Automatically shuts off after 2 minutes of non use.
- Accuracy: +/-2% in clockwise direction from 20% to 100% of Max. Torque.

## Metric

Part #	Drive	Torque Range		Length mm	Width mm	Weight kg
		N.m	Lb.ft			
EEM120SC	1/4"	2.0-20	17.7-177*	427	46	0.75
EEM220SC	3/8"	2.0-20	17.7-177*	427	46	0.75
EEM230SC	3/8"	3.0-30	26.5-265*	427	46	0.75
EEM250SC	3/8"	5.0-50	44.2-442*	452	46	0.83
EEM2100SC	3/8"	10-100	7.4-74	482	46	0.88
EEM3100SC	1/2"	10-100	7.4-74	482	46	0.88
EEM3200SC	1/2"	20-200	14.7-147	522	46	1.00
EEM3250SC	1/2"	25-250	18.4-184	590	46	1.36
EEM3300SC	1/2"	30-300	22.1-221	590	46	1.36
EEM4300SC	3/4"	30-300	22.1-221	590	46	1.40

\* Unit is Lb.in

## Metric

Part #	Drive	Torque Range		Length mm	Width mm	Weight kg
		N.m	Lb.ft			
EEM120	1/4"	2.0-20	17.7-177*	427	46	0.75
EEM220	3/8"	2.0-20	17.7-177*	427	46	0.75
EEM230	3/8"	3.0-30	26.5-265*	427	46	0.75
EEM250	3/8"	5.0-50	44.2-442*	452	46	0.83
EEM2100	3/8"	10-100	7.4-74	482	46	0.88
EEM3100	1/2"	10-100	7.4-74	482	46	0.88
EEM3200	1/2"	20-200	14.7-147	522	46	1.00
EEM3250	1/2"	25-250	18.4-184	590	46	1.36
EEM3300	1/2"	30-300	22.1-221	590	46	1.36
EEM4300	3/4"	30-300	22.1-221	590	46	1.40

\* Unit is Lb.in

Part #	Shank Size	Torque Range		Length mm	Width mm	Weight kg
		N.m	Lb.ft			
EEMH920	9X12	2.0-20	17.7-177*	427	46	0.65
EEMH930	9X12	3.0-30	26.5-265*	427	46	0.65
EEMH950	9X12	5.0-50	44.2-442*	452	46	0.73
EEMH9100	9X12	10-100	7.4-74	482	46	0.78
EEMH14200	14X18	20-200	14.7-147	522	46	0.90
EEMH14250	14X18	25-250	18.4-184	590	46	1.26
EEMH14300	14X18	30-300	22.1-221	590	46	1.26

\* Unit is Lb.in

Part #	Round Hole	Torque Range		Length mm	Width mm	Weight kg
		N.m	Lb.ft			
EEMR1620	$\Phi$ 16	2.0-20	17.7-177*	431	46	0.65
EEMR1630	$\Phi$ 16	3.0-30	26.5-265*	431	46	0.65
EEMR1650	$\Phi$ 16	5.0-50	44.2-442*	456	46	0.73
EEMR16100	$\Phi$ 16	10-100	7.4-74	486	46	0.78
EEMR16200	$\Phi$ 16	20-200	14.7-147	517	46	0.90
EEMR16250	$\Phi$ 16	25-250	18.4-184	585	46	1.26
EEMR16300	$\Phi$ 16	30-300	22.1-221	585	46	1.26

\* Unit is Lb.in





**Metric**

Part #	Drive	Torque Range	Length mm	Width mm	Weight kg
		cN.m			
SM150	1/4"	10-50	170	30	0.32
SM1100	1/4"	20-100	170	30	0.32
SM1250	1/4"	50-250	170	30	0.32
SM1360	1/4"	60-360	170	30	0.32

**English**

Part #	Drive	Torque Range	Length mm	Width mm	Weight kg
		Lb.in			
S1100	1/4"	20-100*	170	30	0.32
S118	1/4"	3-18	170	30	0.32
S136	1/4"	6-36	170	30	0.32

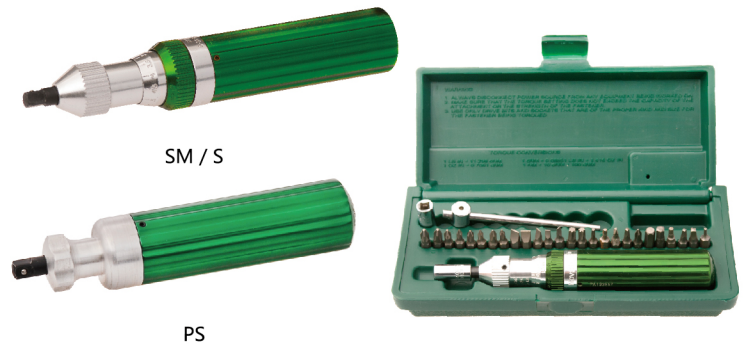
\* Unit is Oz.in

**Metric**

Part #	Drive	Torque Range	Length mm	Width mm	Weight kg
		cN.m			
PS150	1/4"	10-50	140	30	0.24
PS1100	1/4"	30-100	140	30	0.24
PS1250	1/4"	80-250	140	30	0.24
PS1360	1/4"	120-360	140	30	0.24

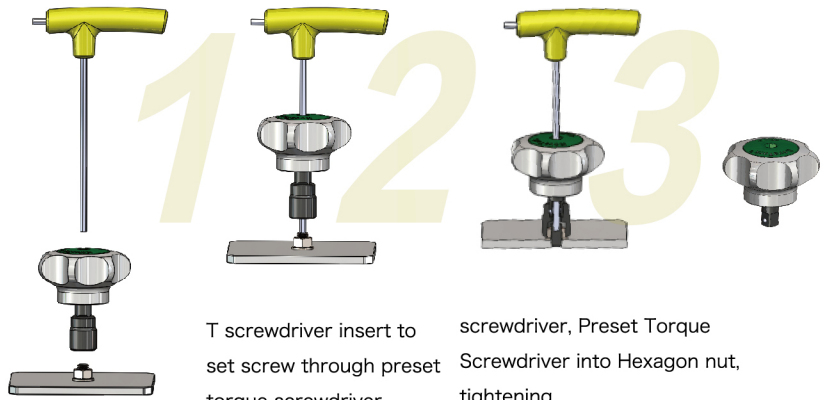
Torque Screwdrivers - SM/S/PS Models

- Anti-backlash designs assures that fasteners will not be accidentally un-tightened.
- Stable torque output
- Standard 1/4" square drive accommodates most commercially available sockets and screw drivers.
- Complies with US ASMEB107.14 standard, accuracy: ±6%
- Lock ring on adjustable models prevents accidental changes of set torque value.
- Unibody construction, no uncomfortable protrusions in the grip.
- SM1250 and SM1360 have 1/4" female square helper drive, convenient for users to insert T-bar or swivel handle to help to apply torque.
- The aluminum handle is anodized for good appearance and lasting finish.



Preset Torque Screwdriver: PX

- Good grip, close to workpiece
- 3/8" Square Drive, Center-hole, tightening the nut easily with socket
- For different kinds of head
- Setting torque as required



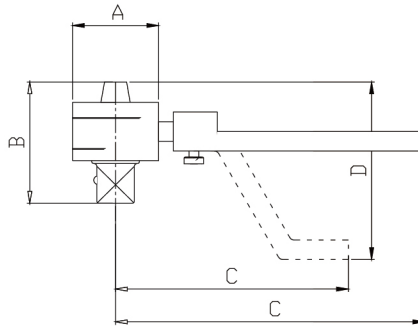
Mini Preset Torque Screwdriver for Medical

- Preset torque
- Stainless shaft
- Handle with cone groove easy to operate
- Specially designed for implanted pacemaker

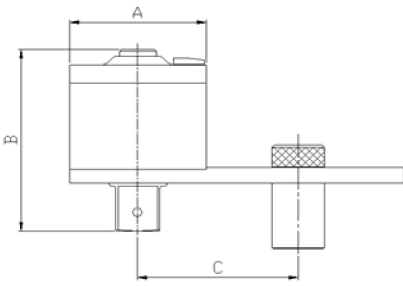


Torque Multipliers - M Models

- Alloy steel construction, long life.
- Ratio accuracy: +/-5%
- M3.31000 has two reaction arms as an option



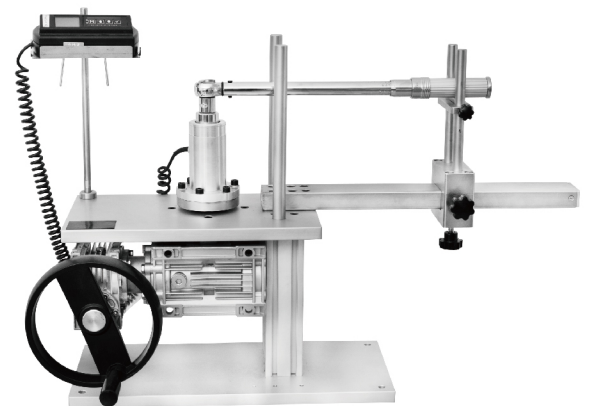
Part #	Ratio	Input Drive	Output Drive	Torque Range		A mm	B mm	C mm	D mm	Tool weight kg	Reaction Arm Weight kg
				N.m	Lb.ft						
M3.31000	3.3:1	1/2"	3/4"	1000	750	71	85	245 / 175	130	1.35	0.77+0.63



Part #	Ratio	Input Drive	Output Drive	Torque Range		A mm	B mm	C(min) mm	D(max) mm	Tool weight kg	Reaction Arm Weight kg
				N.m	Lb.ft						
M51000	5:1	1/2"	3/4"	1000	750	118	98	82	196	7.0	1.2
M51500	5:1	1/2"	1"	1500	1125	118	115	82	196	7.5	1.2
M252500	25:1	1/2"	1"	2500	1875	118	150	82	196	8.9	1.2
M253500	25:1	1/2"	1 1/2"	3500	2600	118	164	82	196	9.1	1.2
M254000	25:1	1/2"	1 1/2"	4000	3000	118	176	82	196	10.0	1.2
M256000	25:1	1/2"	1 1/2"	6000	4500	140	214	105	254	18.3	3.0
M258000	25:1	1/2"	1 1/2"	8000	6000	182	228	125	294	28.0	3.0
M2510000	25:1	3/4"	1 1/2"	10000	7375	182	240	125	294	28.5	3.0

Torque Tester Loader - Manual Type model TS

- Turn the hand wheel to test the torque wrench, apply uniform rate force
- Proper proportion reducer makes loading easier
- Different load cells can be used, special adapters might be required.
- Instrument rack tray is adjustable for comfort and good visibility.
- Can be adjusted to accommodate different wrench lengths and heights.



(Tester and Transducer not be included in this Tester Loader)

Manual Type

Part #	Max. Torque N.m	Arm Length		Length mm	Width mm	Height mm	Weight kg
		Min(mm)	Max(mm)				
TS1350	350	197	686	860	290	590	32.5
TS12000	2000	420	1690	2090	350	590	80



Square Drive Ratchet Head  
(can reverse for clockwise  
and counter-clockwise direction)

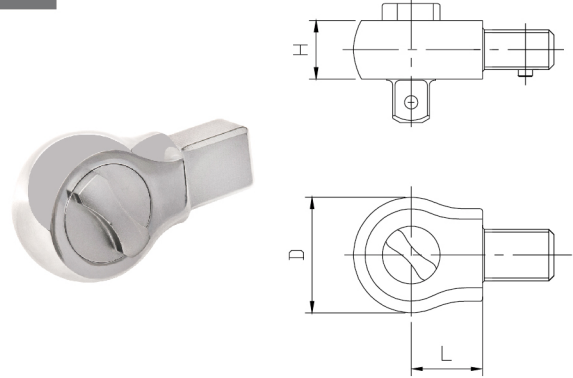
Round Hole  
Ratchet Head

Square hole  
Open End

Square Drive Ratchet Head (can reverse for clockwise and counter-clockwise direction)

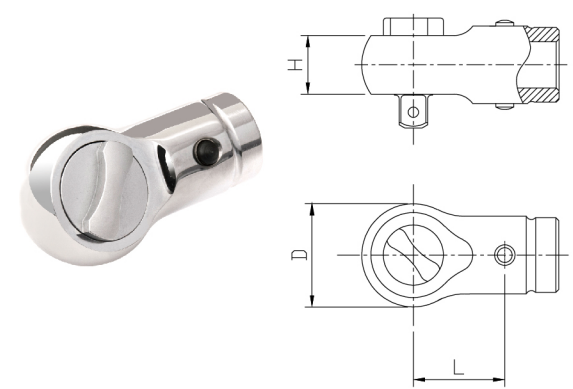
Part#	Drive	Shank Size	L mm	H mm	D mm	Weight g	Max. Torque N.m
DH9120	1/4"	9×12	17.5	15	28	90	20
DH9125	1/4"	9×12	17.5	20	37	135	25
DH92160	3/8"	9×12	17.5	20	38	160	160
DH93160	1/2"	9×12	17.5	20	38	160	160
DH143420	1/2"	14×18	25	20	40	265	420
DH144420	3/4" *	14×18	25	20	40	305	420
DH2441200	3/4"	24×32	35	32	60	1040	1200
DH2451200	1" *	24×32	35	32	60	1140	1200
DH2753000	1"	27×36	50	42	72	1720	3000

\* Length size with "\*" mark are special fittings, you should adjust the torque according to torque wrench manual, see page 15



Round Hole Ratchet Head

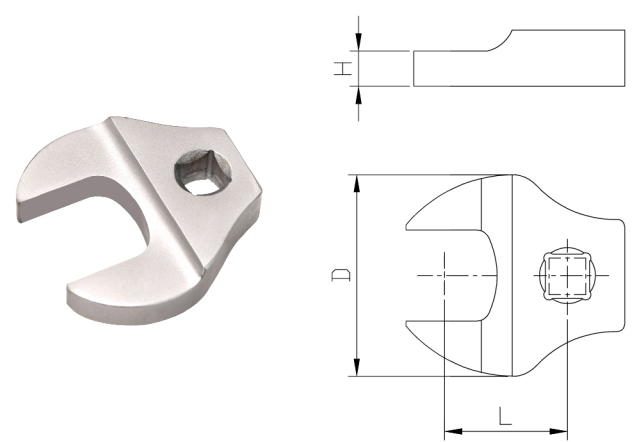
Part#	Drive	Shank Size	L mm	H mm	D mm	Weight g	Max. Torque N.m
DR12120	1/4"	φ12	20.5	15	28	100	20
DR16125	1/4"	φ16	31.8	20	37	150	25
DR162160	3/8"	φ16	31.8	20	38	175	160
DR163420	1/2"	φ16	31.8	20	40	280	420
DR2241200	3/4"	φ22	56	32	60	1200	1200
DR2251200	1"	φ22	56	32	60	1300	1200



Square hole Open End

Part#	Open Size	Drive	L mm	H mm	D mm	Weight g	Max. Torque N.m
OD17	7	1/4"	17.5	5	22	32	9
OD18	8	1/4"	17.5	5	22	32	13
OD29	9	3/8"	25	5	26	46	18
OD210	10	3/8"	25	5.5	26	48	24
OD211	11	3/8"	25	5.5	26	48	32
OD212	12	3/8"	25	7	30	60	41
OD213	13	3/8"	25	7	32	63	48
OD214	14	3/8"	25	8	33	64	63
OD215	15	3/8"	25	8	35	70	77
OD216	16	3/8"	25	8	35	70	92
OD217	17	3/8"	25	8	35	70	109
OD313	13	1/2"	35	8	33	68	51
OD314	14	1/2"	35	8	33	68	63
OD316	16	1/2"	35	9	35	77	92
OD317	17	1/2"	35	9	35	77	109
OD318	18	1/2"	35	10	39	85	139
OD319	19	1/2"	35	10	39	85	139

Part#	Open Size	Drive	L mm	H mm	D mm	Weight g	Max. Torque N.m
OD321	21	1/2"	40	10	42	95	139
OD322	22	1/2"	40	10	43	96	145
OD324	24	1/2"	40	10	48	98	165
OD327	27	1/2"	45	14	51	110	225
OD330	30	1/2"	45	14	57	112	360
OD332	32	1/2"	45	14	60	114	360
OD334	34	1/2"	51	14	64	116	360
OD336	36	1/2"	51	14	70	118	360
OD338	38	1/2"	51	14	72	120	360
OD341	41	1/2"	51	14	82	122	380
OD346	46	1/2"	56	14	89	125	460



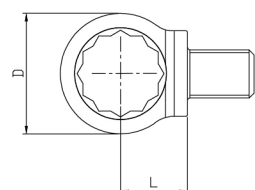




Square Drive Ring End

Part#	Ring Size	Shank Size	L mm	H mm	D mm	Weight g	Max. Torque N.m
QH96	6	9×12	17.5	8	12	43	18
QH97	7	9×12	17.5	8	13	43	25
QH98	8	9×12	17.5	8	14	42	34
QH99	9	9×12	17.5	9	16	45	45
QH910	10	9×12	17.5	9	17	48	58
QH911	11	9×12	17.5	9	18.5	47	72
QH912	12	9×12	17.5	12	20	54	89
QH913	13	9×12	17.5	12	22	53	105
QH914	14	9×12	17.5	12	23	52	125
QH915	15	9×12	17.5	12	24	54	145
QH916	16	9×12	17.5	13	26	56	160
QH917	17	9×12	17.5	13	27	55	160
QH918	18	9×12	17.5	13	28.5	58	160
QH919	19	9×12	17.5	13	30	57	160
QH920	20	9×12	17.5	13	33	68	160
QH921	21	9×12	17.5	13	33	68	160
QH922	22	9×12	17.5	13	34.5	73	160
QH924	24	9×12	25*	13	37.5	80	160
QH927	27	9×12	25*	13	41.5	80	160
QH930	30	9×12	25*	13	45	85	160
QH936	36	9×12	30*	13	52	90	160
QH941	41	9×12	35*	13	61	90	160
QH1410	10	14×18	25	11	16	95	58
QH1411	11	14×18	25	11	18.5	115	75
QH1412	12	14×18	25	11	21.5	125	89
QH1413	13	14×18	25	11	21.5	125	105
QH1414	14	14×18	25	11	23	124	125
QH1415	15	14×18	25	11	24	123	150
QH1416	16	14×18	25	12	26	128	175
QH1417	17	14×18	25	12	27	127	200
QH1418	18	14×18	25	12	28.5	133	230
QH1419	19	14×18	25	12	30.5	138	260
QH1420	20	14×18	25	15	33	148	290
QH1421	21	14×18	25	15	33	148	330
QH1422	22	14×18	25	15	34.5	154	360
QH1424	24	14×18	25	15	37.5	153	360
QH1425	25	14×18	25	15	40	160	360
QH1427	27	14×18	25	16	41.5	160	360

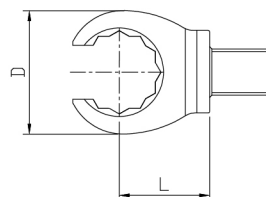
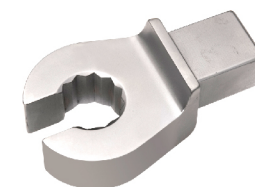
Part#	Ring Size	Shank Size	L mm	H mm	D mm	Weight g	Max. Torque N.m
QH1428	28	14×18	25	16	45	165	360
QH1430	30	14×18	25	16	45	165	360
QH1432	32	14×18	25	16	47.5	168	360
QH1434	34	14×18	30*	16	51	190	360
QH1436	36	14×18	30*	16	54	196	360
QH1438	38	14×18	35*	16	57	210	360
QH1441	41	14×18	35*	16	61	215	360
QH1442	42	14×18	35*	16	63	215	360
QH1446	46	14×18	40*	16	68	225	360
QH1450	50	14×18	40*	16	70	230	360
QH1455	55	14×18	45*	16	76	250	360
QH1460	60	14×18	45*	16	84	255	360
QH2424	24	24×32	35	25	65	880	1200
QH2427	27	24×32	35	25	68	910	1200
QH2430	30	24×32	35	25	72	945	1200
QH2432	32	24×32	35	25	74	961	1200
QH2434	34	24×32	35	25	76	977	1200
QH2436	36	24×32	40*	25	80	1075	1200
QH2438	38	24×32	40*	25	80	1053	1200
QH2441	41	24×32	45*	25	80	1059	1200
QH2446	46	24×32	45*	25	84	1074	1200
QH2450	50	24×32	50*	25	98	1315	1200
QH2455	55	24×32	55*	25	105	1533	1200
QH2460	60	24×32	60*	25	110	1642	1200
QH2465	65	24×32	65*	25	128	1900	1200
QH2470	70	24×32	65*	25	128	1915	1200
QH2730	30	27×36	50	28	70	1190	3000
QH2732	32	27×36	50	28	70	1213	3000
QH2734	34	27×36	50	28	75	1235	3000
QH2736	36	27×36	50	28	75	1225	3000
QH2738	38	27×36	50	28	80	1263	3000
QH2741	41	27×36	50	28	80	1265	3000
QH2746	46	27×36	50	28	86	1270	3000
QH2750	50	27×36	50	28	98	1603	3000
QH2755	55	27×36	55*	28	105	1771	3000
QH2760	60	27×36	60*	28	110	1874	3000
QH2765	65	27×36	60*	28	118	2050	3000
QH2770	70	27×36	65*	28	128	2322	3000



Square drive Open Ring End

Part#	Ring Size	Open Size	Shank Size	L mm	H mm	D mm	Weight g	Max. Torque N.m
QOH910	10	7.1	9×12	17.5	12	22	63	12
QOH911	11	8.6	9×12	17.5	12	22	62	16
QOH912	12	9.0	9×12	17.5	12	24	61	25
QOH913	13	10.0	9×12	17.5	12	25	63	28
QOH914	14	11.0	9×12	17.5	13	27	62	31
QOH916	16	13.0	9×12	17.5	13	30	69	46
QOH917	17	14.0	9×12	17.5	13	31.5	68	53
QOH918	18	14.8	9×12	25*	13	33	77	65
QOH919	19	15.8	9×12	25*	13	34.5	82	74
QOH921	21	16.2	9×12	25*	13	35	92	95
QOH922	22	17.0	9×12	25*	13	37	95	105
QOH924	24	18.0	9×12	25*	13	40	97	145
QOH927	27	21.0	9×12	30*	13	44	105	160
QOH930	30	22.0	9×12	35*	13	48	115	160
QOH932	32	24.0	9×12	35*	13	51	120	160
QOH1413	13	10.0	14×18	25	12	25	135	28
QOH1414	14	11.0	14×18	25	13	27	140	31
QOH1415	15	11.5	14×18	25	13	29	145	38
QOH1416	16	13.0	14×18	25	13	30	145	46
QOH1417	17	14.0	14×18	25	13	31.5	145	53
QOH1418	18	14.8	14×18	25	15	33	150	65
QOH1419	19	15.8	14×18	25	15	34.5	150	74
QOH1421	21	16.2	14×18	25	16	35.5	155	100
QOH1422	22	17.0	14×18	25	16	37	155	115

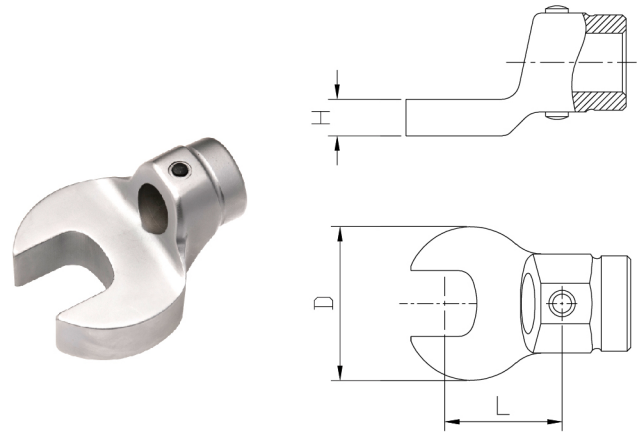
Part#	Ring Size	Open Size	Shank Size	L mm	H mm	D mm	Weight g	Max. Torque N.m
QOH1424	24	18.5	14×18	25	16	40	155	145
QOH1427	27	20.0	14×18	30*	16	44	155	160
QOH1430	30	22.0	14×18	35*	16	48	155	180
QOH1432	32	24.0	14×18	35*	16	51	155	200
QOH1434	34	25.0	14×18	40*	16	55	160	260
QOH1436	36	27.0	14×18	40*	16	58	165	260
QOH1438	38	28.0	14×18	45*	16	61	175	260
QOH1441	41	30.0	14×18	50*	16	65	180	260
QOH1446	46	31.0	14×18	50*	16	71	190	260
QOH1450	50	34.0	14×18	55*	16	77	195	260
QOH2419	19	15.8	24×32	35	25	42	627	600
QOH2430	30	22.0	24×32	35	25	67	755	600
QOH2432	32	24.0	24×32	35	25	69	755	600
QOH2434	34	25.0	24×32	40*	25	71	790	600
QOH2436	36	27.0	24×32	40*	25	73.5	830	600
QOH2438	38	28.0	24×32	45*	25	80	922	600
QOH2441	41	30.0	24×32	50*	25	83	980	600
QOH2446	46	32.0	24×32	50*	25	92	970	600
QOH2450	50	34.0	24×32	55*	25	98	1180	600
QOH2455	55	39.0	24×32	55*	25	106	1160	600
QOH2730	30	22.0	27×36	50	28	75	1250	1200
QOH2732	32	24.0	27×36	50	28	75	1250	1200
QOH2736	36	27.0	27×36	50	28	80	1350	1200



\* Length size with "\*" mark are special fittings, you should adjust the torque according to torque wrench manual, see page 15

Metric

Part#	Open Size	Round Hole	L mm	H mm	D mm	Weight g	Max. Torque N.m
OR125.5	5.5	φ12	20.5	5	22	68	5
OR126	6	φ12	20.5	5	22	68	6
OR127	7	φ12	20.5	5	22	66	9
OR128	8	φ12	20.5	5	22	64	13
OR129	9	φ12	20.5	5	26	74	18
OR1210	10	φ12	20.5	5	26	72	24
OR1211	11	φ12	20.5	5	26	70	25
OR1212	12	φ12	20.5	5	26	68	25
OR1213	13	φ12	20.5	5	28	68	25
OR167	7	φ16	31.8	5	22	80	9
OR168	8	φ16	31.8	5	22	83	13
OR169	9	φ16	31.8	5.5	26	88	18
OR1610	10	φ16	31.8	5.5	26	92	24
OR1611	11	φ16	31.8	7	26	96	32
OR1612	12	φ16	31.8	7	30	100	41
OR1613	13	φ16	31.8	7	32	105	51
OR1614	14	φ16	31.8	8	35	115	63
OR1615	15	φ16	31.8	8	35	115	77
OR1616	16	φ16	31.8	9	38	130	92
OR1617	17	φ16	31.8	9	38	130	109
OR1618	18	φ16	31.8	10	42	140	125
OR1619	19	φ16	31.8	10	42	140	145
OR1620	20	φ16	31.8	11	50	148	160
OR1621	21	φ16	31.8	11	50	154	190
OR1622	22	φ16	31.8	11	50	162	220
OR1623	23	φ16	31.8	13	53	180	250
OR1624	24	φ16	31.8	13	53	188	280
OR1625	25	φ16	31.8	13	53	196	320
OR1626	26	φ16	31.8	13	53	204	360
OR1627	27	φ16	31.8	13	64	240	360
OR1628	28	φ16	31.8	13	66	250	360
OR1629	29	φ16	31.8	13	68	260	360
OR1630	30	φ16	31.8	13	70	270	360
OR1631	31	φ16	31.8	13	70	285	360
OR1632	32	φ16	31.8	13	70	285	360
OR1633	33	φ16	41.8*	13	75	340	360
OR1634	34	φ16	41.8*	13	78	360	360
OR1636	36	φ16	41.8*	13	80	385	360
OR1638	38	φ16	41.8*	13	85	420	360
OR1639	39	φ16	41.8*	13	85	420	360
OR1641	41	φ16	41.8*	13	90	450	360
OR1642	42	φ16	41.8*	13	93	470	360
OR1644	44	φ16	51.8*	13	98	615	360
OR1646	46	φ16	51.8*	13	100	615	360
OR1648	48	φ16	51.8*	13	104	620	360
OR1650	50	φ16	51.8*	13	106	630	360
OR1655	55	φ16	56.8*	13	116	690	360
OR2218	18	φ22	56	25	65	810	1200
OR2222	22	φ22	56	25	68	845	1200
OR2224	24	φ22	56	25	70	845	1200
OR2227	27	φ22	56	25	72	850	1200
OR2230	30	φ22	56	25	75	850	1200
OR2232	32	φ22	56	25	76	855	1200
OR2234	34	φ22	56	25	78	865	1200
OR2236	36	φ22	56	25	80	865	1200
OR2241	41	φ22	56	25	95	1050	1200
OR2246	46	φ22	56	25	100	1130	1200
OR2250	50	φ22	56	25	106	1280	1200
OR2255	55	φ22	65*	25	119	1430	1200
OR2260	60	φ22	65*	25	130	1460	1200



English

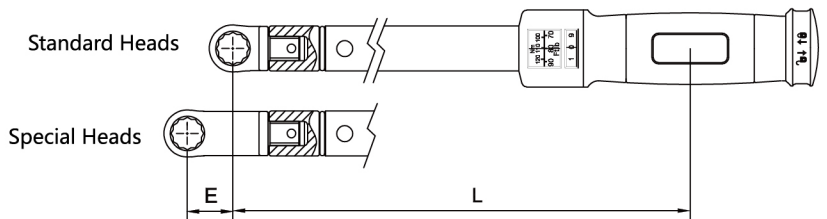
Part#	Open Size	Round Hole	L mm	H mm	D mm	Weight g	Max. Torque N.m
OYR1216	1/2"	φ12	20.5	5	28	68	25
OYR168	1/4"	φ16	31.8	5	22	80	9
OYR1610	5/16"	φ16	31.8	6	24	82	34
OYR1612	3/8"	φ16	31.8	6	28	84	45
OYR1614	7/16"	φ16	31.8	7	30	88	72
OYR1616	1/2"	φ16	31.8	7	32	105	51
OYR1618	9/16"	φ16	31.8	8	35	115	77
OYR1620	5/8"	φ16	31.8	9	38	130	92
OYR1622	11/16"	φ16	31.8	9	38	130	109
OYR1624	3/4"	φ16	31.8	10	42	140	145
OYR1626	13/16"	φ16	31.8	11	50	154	190
OYR1628	7/8"	φ16	31.8	11	50	162	220
OYR1630	15/16"	φ16	31.8	13	53	188	280
OYR1632	1"	φ16	31.8	13	53	204	360
OYR1634	1 1/16"	φ16	31.8	13	64	240	360
OYR1636	1 1/8"	φ16	31.8	13	68	260	360
OYR1640	1 1/4"	φ16	31.8	13	70	285	360
OYR1646	1 7/16"	φ16	41.8*	13	80	300	360
OYR1648	1 1/2"	φ16	41.8*	13	85	310	360
OYR1652	1 5/8"	φ16	41.8*	13	90	320	360
OYR1656	1 3/4"	φ16	51.8*	13	98	330	360
OYR1664	2"	φ16	51.8*	13	106	345	360
OYR2248	1 1/2"	φ22	56	25	80	1000	1200
OYR2252	1 5/8"	φ22	56	25	95	1050	1200
OYR2256	1 3/4"	φ22	56	25	100	1100	1200
OYR2264	2"	φ22	56	25	106	1150	1200

$$T(w) = T \frac{L}{L + E} \quad K = \frac{L}{L + E}$$

$$T(w) = T \cdot K$$

\* Length size with "\*" mark are special fittings, you should adjust the torque according to torque wrench manual, see page 15

- T(w) — Torque set on the wrench
- T — Torque applied by extension (desired torque)
- L — Original Length
- E — Extended Length
- K — Factor set on Electronic Torque Wrench





# Round Hole Ring End

## Metric

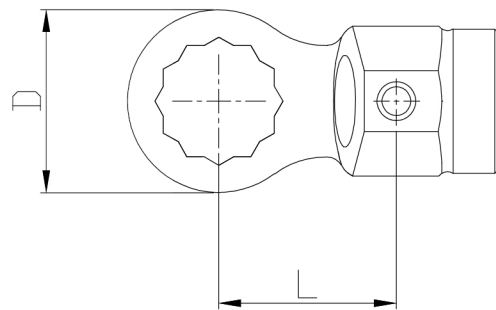
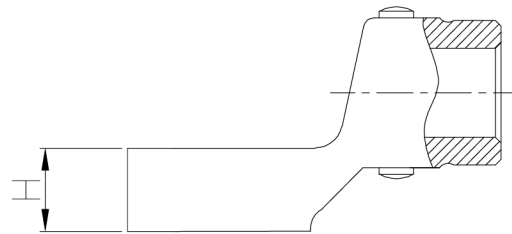
Part#	Open Size	Round Hole	L mm	H mm	D mm	Weight g	Max. Torque N.m
QR126	6	φ12	20.5	5	13	67	10
QR127	7	φ12	20.5	5	13	65	13
QR128	8	φ12	20.5	5	13	63	18
QR129	9	φ12	20.5	5	14.5	63	22
QR1210	10	φ12	20.5	5	16	63	25
QR1211	11	φ12	20.5	5	17.5	63	25
QR1212	12	φ12	20.5	5	19	63	25
QR167	7	φ16	31.8	8	13	70	25
QR168	8	φ16	31.8	8	14	74	34
QR169	9	φ16	31.8	9	16	78	45
QR1610	10	φ16	31.8	11	16	82	58
QR1611	11	φ16	31.8	11	18.5	87	72
QR1612	12	φ16	31.8	11	21.5	93	89
QR1613	13	φ16	31.8	11	21.5	100	105
QR1614	14	φ16	31.8	11	23	105	125
QR1615	15	φ16	31.8	11	24	111	150
QR1616	16	φ16	31.8	12	26	118	175
QR1617	17	φ16	31.8	12	27	125	200
QR1618	18	φ16	31.8	12	28.5	132	230
QR1619	19	φ16	31.8	12	30.5	140	260
QR1620	20	φ16	31.8	15	33	150	290
QR1621	21	φ16	31.8	15	33	155	330
QR1622	22	φ16	31.8	15	34.5	155	360
QR1623	23	φ16	31.8	15	36	155	360
QR1624	24	φ16	31.8	15	37.5	160	360
QR1625	25	φ16	31.8	15	40	165	360
QR1626	26	φ16	31.8	16	41.5	175	360
QR1627	27	φ16	31.8	16	41.5	175	360
QR1628	28	φ16	31.8	16	45	185	360
QR1629	29	φ16	31.8	16	45	185	360
QR1630	30	φ16	31.8	16	45	185	360
QR1631	31	φ16	31.8	16	47.5	185	360
QR1632	32	φ16	31.8	16	47.5	185	360
QR2222	22	φ22	56	25	62	900	1200
QR2224	24	φ22	56	25	65	1000	1200
QR2227	27	φ22	56	25	68	1050	1200
QR2230	30	φ22	56	25	72	1100	1200
QR2232	32	φ22	56	25	74	1100	1200
QR2234	34	φ22	56	25	76	1150	1200
QR2236	36	φ22	56	25	80	1150	1200
QR2241	41	φ22	56	25	80	1200	1200
QR2246	46	φ22	56	25	84	1250	1200



## English

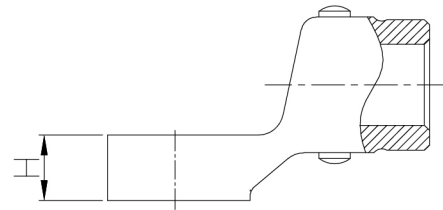
Part#	Open Size	Round Hole	L mm	H mm	D mm	Weight g	Max. Torque N.m
QYR168	1/4"	φ16	31.8	8	13	70	25
QYR1610	5/16"	φ16	31.8	8	14.2	77	34
QYR1612	3/8"	φ16	31.8	8	17	92	58
QYR1614	7/16"	φ16	31.8	10	18.5	98	89
QYR1616	1/2"	φ16	31.8	11	22	100	105
QYR1618	9/16"	φ16	31.8	11	23	105	125
QYR1620	5/8"	φ16	31.8	12	26	118	125
QYR1622	11/16"	φ16	31.8	12	28.5	118	125
QYR1624	3/4"	φ16	31.8	12	30.5	140	260
QYR1626	13/16"	φ16	31.8	15	33	150	290
QYR1628	7/8"	φ16	31.8	15	34.5	155	360
QYR1630	15/16"	φ16	31.8	15	37.5	160	360
QYR1632	1"	φ16	31.8	16	41.5	165	360
QYR1634	1 1/16"	φ16	31.8	16	41.5	175	360
QYR1636	1 1/8"	φ16	31.8	16	45	185	360
QYR1640	1 1/4"	φ16	31.8	16	47.5	185	360
QYR1642	1 5/16"	φ16	41.8*	16	51	200	360
QYR1646	1 7/16"	φ16	41.8*	16	55	210	360
QYR1648	1 1/2"	φ16	41.8*	16	58	220	360
QYR1652	1 5/8"	φ16	51.8*	18	65	235	360
QYR1656	1 3/4"	φ16	51.8*	18	68	245	360
QYR1660	1 7/8"	φ16	51.8*	18	72	258	360
QYR1662	1 15/16"	φ16	51.8*	18	74	260	360
QYR1664	2"	φ16	51.8*	18	75	260	360
QYR2246	1 7/16"	φ22	56	25	75	1150	1200
QYR2248	1 1/2"	φ22	56	25	80	1180	1200
QYR2252	1 5/8"	φ22	56	25	82	1200	1200
QYR2256	1 3/4"	φ22	56	25	84	1250	1200
QYR2264	2"	φ22	56	25	84	1300	1200

\* Length size with "\*" mark are special fittings, you should adjust the torque according to torque wrench manual, see page 15



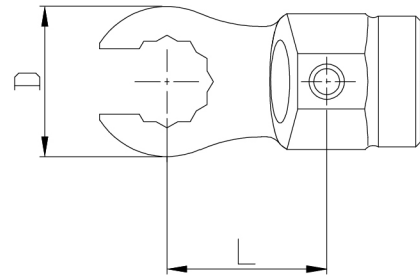
Metric

Part#	Ring Size	Open Size	Round Hole	L mm	H mm	D mm	Weight g	Max. Torque N.m
QOR126	6	4.5	φ12	20.5	5	17	76	4
QOR127	7	5.0	φ12	20.5	5	17	74	5
QOR128	8	6.0	φ12	20.5	5	17	72	6
QOR129	9	6.5	φ12	20.5	5	18.5	72	7
QOR1210	10	7.1	φ12	20.5	5	20	72	8
QOR1211	11	8.6	φ12	20.5	5	21.5	72	10
QOR1212	12	9.0	φ12	20.5	5	23	72	12
QOR167	7	5.0	φ16	31.8	9	16	85	6
QOR168	8	6.0	φ16	31.8	9	18	88	8
QOR169	9	6.5	φ16	31.8	10	20	92	10
QOR1610	10	7.1	φ16	31.8	12	22	97	12
QOR1611	11	8.6	φ16	31.8	12	22	102	16
QOR1612	12	9.0	φ16	31.8	12	24	107	25
QOR1613	13	10.0	φ16	31.8	12	25	112	28
QOR1614	14	11.0	φ16	31.8	13	27	118	31
QOR1615	15	11.5	φ16	31.8	13	29	125	38
QOR1616	16	13.0	φ16	31.8	13	30	130	46
QOR1617	17	14.0	φ16	31.8	13	31.5	137	53
QOR1618	18	14.8	φ16	31.8	13	33	143	65
QOR1619	19	15.8	φ16	31.8	13	34.5	150	74
QOR1620	20	16.0	φ16	31.8	16	35.5	170	86
QOR1621	21	16.2	φ16	31.8	16	35.5	170	100
QOR1622	22	17.0	φ16	31.8	16	37	170	115
QOR1623	23	18.0	φ16	31.8	16	38.5	170	125
QOR1624	24	18.5	φ16	31.8	16	40	170	145
QOR1625	25	19.0	φ16	31.8	16	41	170	150
QOR1626	26	19.3	φ16	31.8	16	42	170	160
QOR1627	27	20.0	φ16	31.8	16	44	170	160
QOR1628	28	21.0	φ16	31.8	16	48	170	170
QOR1629	29	21.5	φ16	31.8	16	48	170	180
QOR1630	30	22.0	φ16	31.8	16	48	170	180
QOR1631	31	23.0	φ16	31.8	16	51	170	200
QOR1632	32	24.0	φ16	31.8	16	51	170	200



English

Part#	Ring Size	Open Size	Round Hole	L mm	H mm	D mm	Weight g	Max. Torque N.m
QOYR1608	1/4"	4.5	φ16	31.8	9	16	85	6
QOYR1616	1/2"	9.8	φ16	31.8	12	25	112	28
QOYR1618	9/16"	11.2	φ16	31.8	13	29	125	38
QOYR1620	5/8"	13	φ16	31.8	13	30	130	46
QOYR1622	11/16"	14.4	φ16	31.8	13	33	143	65
QOYR1624	3/4"	15.9	φ16	31.8	13	34.5	150	74
QOYR1626	13/16"	16	φ16	31.8	16	35.5	170	100
QOYR1628	7/8"	17	φ16	31.8	16	37	170	115
QOYR1630	15/16"	18.3	φ16	31.8	16	40	170	145
QOYR1632	1"	19.3	φ16	31.8	16	41	170	150
QOYR1634	1 1/16"	20	φ16	31.8	16	44	170	160
QOYR1636	1 1/8"	21.2	φ16	31.8	16	45	170	180
QOYR1640	1 1/4"	23.4	φ16	31.8	16	51	170	200
QOYR1646	1 7/16"	27.1	φ16	41.8*	16	65	200	200
QOYR1648	1 1/2"	28	φ16	41.8*	16	70	210	200
QOYR1652	1 5/8"	30.6	φ16	51.8*	18	75	220	200
QOYR1656	1 3/4"	31	φ16	51.8*	18	82	235	200
QOYR1664	2"	34	φ16	51.8*	18	90	255	200
QOYR2246	1 7/16"	27.0	φ22	56	25	75	1150	600
QOYR2248	1 1/2"	28.0	φ22	56	25	80	1180	600
QOYR2252	1 5/8"	30.0	φ22	56	25	82	1200	600
QOYR2256	1 3/4"	31.0	φ22	56	25	84	1250	600
QOYR2264	2"	34.0	φ22	56	25	84	1300	600



\* Length size with "\*" mark are special fittings, you should adjust the torque according to torque wrench manual, see page 15



## Shanghai UB Machinery Co., Ltd.

Hotline: 400 820 5285

Address: No. 168, Qianqiao Road, Fengxian District, Shanghai, 201407 China

Tel: 86 21 63678175

Fax: 86 21 63672809

Email: [sales@novatork.com](mailto:sales@novatork.com)

Website: <http://www.novatork.com.cn>

Alibaba: <http://shyoubai.en.alibaba.com>